

Bellefaire JCB



Perspective. Viewpoint. Focus.

Annual Report 2014/15



Dear Friends

Perspective. Outlook. Viewpoint. At Bellefaire JCB, we pride ourselves on working hard to understand and respect all perspectives – that of the client who is a child, that of the parent and those of our team of skilled social workers and therapists. Through years of experience in the behavioral health realm we have developed an expertise that enables us to appreciate that everyone has a unique perspective and that we must find common ground in order to heal and move forward. We accomplished this in many significant ways this past year.

Bellefaire JCB is pleased to have completed another successful and impactful year in 2015. With the exceptional guidance, vision and dedication of our Board of Directors, Bellefaire JCB has been proactive and diligent in developing financially responsible methods of maintaining a balanced budget while serving at-risk and vulnerable children, youth and families. Bellefaire continues to place significant emphasis on the geographic diversification of our client base and a diversification of our service array. In 2015, Bellefaire served nearly 22,000 children, youth, and family and community members from more than 66 Ohio counties and eight states. Some highlights of how the agency fulfilled its mission of helping children and preserving families follow.

We are particularly proud of our service model that enables our professionally trained and educated staff to bring services to those in the community. Counseling and community-based treatment services are provided in a variety of locations from our Shaker Heights campus to client homes, as well as in schools throughout North-

east Ohio. By providing services within the community, Bellefaire ensures access to programs and services for those most in need and enables staff to reach clients in a familiar environment where parents, siblings, guardians, teachers, and other people significant in their lives are able to collaborate and “wrap around” the client in the creation of a community of care.

As you read this Annual Report, please remember that you play a crucial role as a partner and supporter of Bellefaire. Your ongoing support of our activities enables us to continue to serve, adapt and innovate to meet the current and emerging needs of our community.

On behalf of the dedicated staff and Board of Directors of Bellefaire JCB, thank you for your continued support. Through your generosity, you have joined us in our mission for excellence...for wellness...for children.



A handwritten signature in black ink, appearing to read 'B. Schlang'.

Bradley J. Schlang
Chair, Board of Directors



A handwritten signature in black ink, appearing to read 'A. Jacobs'.

Adam G. Jacobs, Ph.D.
President

2014-2015 at Bellefaire JCB

ABOUT US 2014 TIMELINE



JULY

Social Advocates for Youth's (SAY) Summer Leadership Institute was featured on 19 Action News with Romona Robinson on her segment, Romona's Kids. It was a great opportunity for our SAY teens to spread the word on their campaign, "Alternative High," in which students identified things they enjoyed doing that did not involve the use of substances. They made T-shirts to go with the campaign, as well as a video talking about their alternative highs.

AUGUST

Nearly 600 runners, walkers, cyclists and volunteers took to the streets of Shaker Heights and nearby communities for the 19th Annual Biathlon and Walk. Afterward, everyone enjoyed a post-race picnic on campus with awards, food, kids' activities and entertainment.



2014



SEPTEMBER

OCTOBER

NOVEMBER

DECEMBER

Renovations in Building N (formerly known as the Bellefaire School) were completed, providing the Monarch Transition Education Program with new state-of-the-art space.

The JDN Early Childhood Center earned a five-star rating – the highest rating possible – in Step Up to Quality, an accreditation designed to improve the quality of early child care and education programs in Ohio. JDN was one of only two centers in Cuyahoga County to earn this rating and one of only 20 in the entire state.

Celebrating its 25th anniversary, Bowl for Kids' Sake raised more than \$50,000 for Bellefaire's Jewish Big Brother Big Sister Association. More than 300 participants enjoyed an afternoon of bowling, food and entertainment – including a visit from Cleveland Cavaliers mascot, Moondog.

Sharing their artistic strengths with the community, students at Monarch Center for Autism created winter-inspired self-portraits at Eton Chagrin Boulevard's annual holiday display, the Snowflake Giving Garden. The portraits were created using finger painting, drawing, collage and other techniques that complemented the students' work in art therapy.

Holiday gifts were collected and delivered to approximately 1,500 children in Bellefaire's programs, thanks to the extraordinary generosity of caring individuals and organizations in our community.

2014-2015 at Bellefaire JCB

ABOUT US 2015 TIMELINE



JANUARY

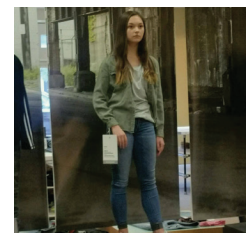


FEBRUARY

Take a Closer Look, Bellefaire's Homeless and Missing Youth awareness campaign by Doner Advertising, won a Gold Addy, as well as *Best in Show*, at the Cleveland American Advertising Awards. The campaign featured a series of lifelike and visually striking faceless figures placed across Greater Cleveland – each wearing a sweatshirt depicting the reason behind their homelessness. The campaign was entered into regional competition.



2015



MARCH

Soldiers from the Israel Defense Forces (IDF) engaged in a professional exchange of ideas with Bellefaire staff, discussing similarities in their work with troubled and at-risk youth. Consultation with the IDF is part of an ongoing partnership for the last 15 years.

APRIL

MAY

Bellefaire's Homeless and Missing Youth campaign, Take a Closer Look at Youth Homelessness, won a national Gold Addy from the American Advertising Federation.

JUNE

Bellefaire, along with Doner Advertising, created a 72-hour pop up shop in upscale Legacy Village to raise awareness of youth homelessness. The faux store, *2nd Look*, seemed like hip retailer at first glance, but inside, customers learned about some of the harsh realities behind homeless teens through live mannequins, eye-opening messaging on sales tags and scripted interaction with "sales associates."

FOCUS. EXAMINE FROM ALL ANGLES. EXPERIENCE FROM ANOTHER PERSPECTIVE. LEARN. GROW.

At Bellefaire JCB, clients and their families seek outpatient counseling for a wide range of developmental and social issues including:

- Parent-child/child-sibling conflicts including divorce
- School related issues
- Attention deficit related disorders
- Problems with mood or motivation
- Depression and anxiety
- Attempts and thoughts of suicide
- Drug and alcohol abuse
- Social skills programs for the Orthodox community

Outpatient Therapy counselors provide the consistency that clients and their families need. Counselors and social workers identify each client's challenges and develop a customized treatment plan with goals and objectives. Therapists work with individuals on resiliency, emotional processing, behavioral insight, communication, accepting limitations and many other struggles.

Children being treated for mild or moderate issues often stay in counseling for less than six months. Children with more severe issues or complicated and multi-layered trauma can be in counseling for nine months to a year – and sometimes even beyond.

Clients and families seeking treatment through Bellefaire's Outpatient Counseling program come from throughout Cuyahoga County. Bellefaire sees clients living in the city of Cleveland as well as throughout many of Cleveland's primarily east side suburbs, including Beachwood, Cleveland Heights, University Heights. Clients range in age from 6-18. On occasion, Bellefaire therapists will treat 5-year-olds or those over the age of 18 if the therapy needed is a continuation of services begun while the client was still under 18.

Bellefaire's Outpatient Therapy program is highly collaborative and uses a team approach to helping children. This cooperative atmosphere improves the quality of care that each client at Bellefaire receives.

Therapists working in outpatient counseling at Bellefaire are among the most educated and highly trained throughout the region. All therapists hold a master's degree and are licensed counselors, social workers or marriage and family therapists.

Outpatient therapists work with children who are in Residential Treatment on campus, as well as with children who live in the community at home, with relatives or in foster care. Also, many work with children who are dually diagnosed with substance use and mental health challenges.

Bellefaire offers its more than 25 therapists a significant amount of internal training including almost monthly staff continuing education sessions on topics such as working with LGBT clients, trauma, therapeutic interventions, intensive family therapy and ethics.

Lenses: Focus on



Outpatient Counseling

Lenses:



Through the Eyes of a Client

THROUGH THE LENS OF A CLIENT – WILL – WHO STRUGGLES WITH SEVERE DEPRESSION AND DRUG USE RESULTING FROM ABUSE.



“My story is still being written. I’m a work in progress. I’m a survivor.”

Will began counseling at Bellefaire when he was 15 years old. His story is a heartbreaking one of a family life that had deteriorated so badly that Will needed counseling and intense therapy to address drug abuse, severe depression and anxiety.

“My mom kind of just left me to rot... it was clear she didn’t want me anymore. My mom said she would visit and she never showed up. I knew she was never coming back for me. On my birthday, my mom told me to kill myself. I was all alone.”

Years of family neglect, abandonment, violence and distrust had taken a toll on Will as he was entering adolescence. He used drugs to forget. He was suicidal. Counseling at Bellefaire helped Will deal with the trauma, depression, anxiety and substance abuse brought on by his unsafe and unstable family situation.

“When I first started at Bellefaire, I felt very hopeless, lost, confused and hurt. I remember thinking I’m never going to get out of this. I remember feeling scared.”

Will formed an unshakeable bond with his primary therapist, Stephanie. Her guided therapy, patience and listening ear forever changed his path.

“Ms. Stephanie completely changed my life. I felt a lot of strong emotion coming on in therapy at Bellefaire. I liked the acceptance the staff at Bellefaire gave me. Just their understanding and how they helped me.”

Working collaboratively, Bellefaire’s licensed clinical counselors and psychologist, evaluated, identified and implemented an effective treatment plan. Will, like many clients at Bellefaire, was treated for multiple, interrelated behavioral and mental health issues.

“Ms. Stephanie cracked my shell and took me out of my discomfort zone and placed me in a comfort zone and allowed me to be Will.”

Forcing Will to confront many of the demons in his past, helping him learn new ways to deal with emotion and the shame associated with abuse allowed Will to acknowledge that none of the travesties surrounding his upbringing were his fault. He learned he could forge a new path.

“Bellefaire helped me grow. Bellefaire changed my life. I feel like I can do anything as long as I put my mind to it... I have the possibility to do so.”

Will is working toward completing his high school education. He is a music enthusiast who plays the flute, clarinet, electric and acoustic guitars. He loves skateboarding.

“I love music so much. I want to do something with music one day. But I really kind of would like to be a firefighter because those are the people that others really look up to.”

Will credits Bellefaire with the chance to make these dreams come true.

“It is because of Bellefaire that I am alive today.”



THROUGH THE LENS OF A THERAPIST – STEPHANIE – WHO HELPS GUIDE CHILDREN TO A BETTER PATH.



“I love coming to work. I’ve been given the opportunity to work at Bellefaire and I say to myself, ‘Why not work where you can make the most impact?’ My role is helping families stay together.”

Stephanie Sava is a Licensed Professional Clinical Counselor with Supervisory Licensure and one of nearly 25 counselors at Bellefaire working with residential and outpatient clients. A licensed clinical therapist for 10 years, Stephanie looks at her work in Bellefaire’s counseling program as an opportunity.

“First I work to establish trust. The hardest part is getting the kids to trust you. I want them to know that they can tell me anything. Just through listening, I create a space that someone can share and unload.”

Stephanie’s deep understanding of children and the ways in which counseling can help is foremost in her therapy. In Will’s case, trauma and abuse had completely distorted his view of an adult/child relationship. She saw it as her responsibility to teach him what a healthy relationship entails – trust, responsibility and safety.

“Will was in search of his identity and in ways I provided the safety net,” she recalls. “He struggled with his sexuality, with what it means to be a healthy sober teen, with his relationship with his younger half- sister and mostly with his relationship with his mother.”

Stephanie works to change her clients’ behaviors by replacing them with better, safer and healthier thoughts and routines. She credits the team atmos-

phere among Bellefaire colleagues that ultimately improves the quality of care to clients.

“A lot of what I do is education. Kids need to learn new behaviors and replace old ways. Here at Bellefaire the treatment team involves many people. Will’s was a very complex. Some specific techniques I used were Trauma Focused Cognitive Behavior Therapy (TFCBT), Cognitive Behavior Therapy and Dialectical Behavior Therapy (DBT).”

Stephanie found that the TFCBT was enormously effective with Will. Under her guidance, Will would write his narrative and then read it aloud. Reading was cathartic. She also felt it was important to just allow Will to be a kid. On nicer days she walked with him outside. Some days they talked about music and she often encouraged him to bring his guitar and play for her.

Even today, Stephanie feels emotional toward the intense process of working with Will.

“Will was resilient and willing to be challenged. Will’s story was one of the most profound cases of abuse I personally was ever involved with and he was very likeable if a bit sneaky,” she remembers.

Will’s progress and ultimate success, like so many of Bellefaire’s clients, make the journey worthwhile.

“At the end of the day I’m hopeful. Hopeful and optimistic,” she concludes.



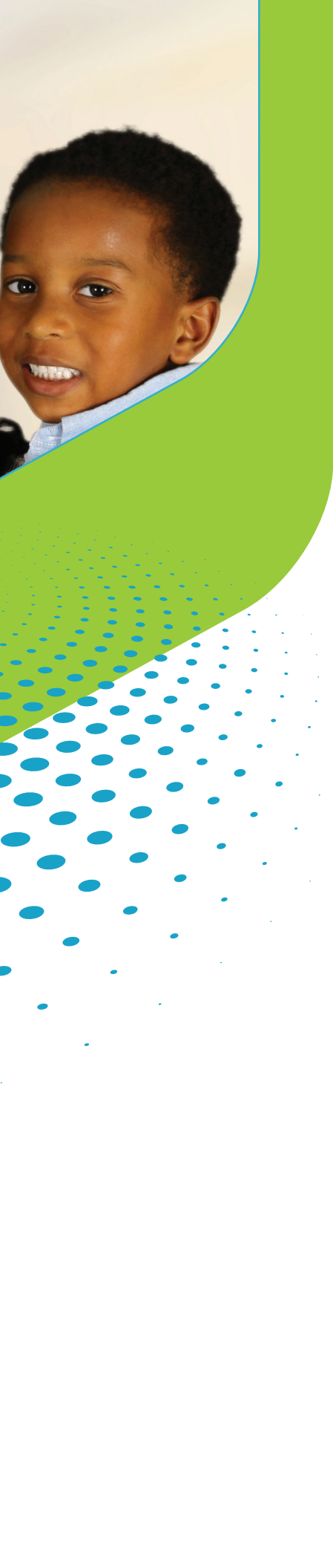
Lenses: Through the



Eyes of a Therapist



**THROUGH THE LENS OF BELLEFAIRE
WHOSE SERVICES HELP
CHILDREN AND THEIR FAMILIES
AND WHOSE VALUES EXTEND
BEYOND THEIR CLIENTS TO
THE COMMUNITY AT LARGE.**



Lenses: Through the Eyes of Bellefaire

Our values shape who we are today and the person we will become tomorrow. Here we enumerate the underlying values that fuel Bellefaire's exceptional care to children and their families.

Connecting to Children, Young Adults and Their Families

- Protection and nurturing of children and young adults
- Respect for family
- Provision of a safe environment
- Development of each individual's potential
- Respect for personal worth and individuality
- Consideration of the whole person
- Regard for cultural, ethnic and religious diversity

Serving the Community

- Continuance of identity with the Jewish community and its values, culture and practices
- Outreach and service to children, young adults, and families from all segments of the Community, including, but not limited to, the Jewish community
- Advocacy on behalf of children, young adults, and families
- Involvement with other agencies and organizations to promote the welfare of children, young adults, and families
- Development of committed, diverse and knowledgeable lay leadership
- Increased philanthropy and prudent use of resources

Excellence in Our Staff

- Development of a motivated, caring, and professional staff
- Support for continuing education and advancement
- Promotion of mutual respect and cooperation
- Accountability for use of agency resources
- Promotion of cultural, ethnic and religious diversity

Growth in Our Field

- Provision of education, prevention, and treatment services
- Commitment to the highest standards of quality care
- Leadership in advancing knowledge and creating service models at the local, regional and national level
- Creation of centers of excellence in targeted areas

July 1, 2014-June 30, 2015

PROGRAM HIGHLIGHTS

**BELLEFAIRE SERVED NEARLY
22,000 CHILDREN AND
FAMILIES THIS PAST YEAR IN
THE FOLLOWING PROGRAMS:**



MONARCH CENTER FOR AUTISM

Preschool, Day School
and High School

Transition Education Program

Therapeutic Residential
– Boarding Academy

Lifeworks (Adult Day
Services and Monarch Hall
Residence for Adults)

Monarch Center for Autism

- Monarch School enrolled more than 125 students. According to the Parent Satisfaction Survey, 97 percent of parents rated services as “Excellent” or “Good,” and 94 percent agreed that their child benefitted from his/her experience at Monarch.
- Monarch Transition Education Program (MTEP) opened its new state-of-the-art 10,000 square foot facility on Bellefaire JCB’s campus. It includes a fitness center, student-run store, multi-sensory room, technology center, horticulture center, kitchen, laundry room and student-run microenterprises.
- Monarch enhanced its educational outreach to the international autism community by hosting and archiving 10 free webinars/lectures (several of which had more than 200 attendees), distributing eight e-newsletters to more than 4,100 people worldwide, and expanding our web and social media presence by upwards of 33 percent.
- Monarch integrated new technology at the school including more than 118 Apple iPads, 26 SmartBoards, touch-interaction Smart Projectors, touch panel monitors and more than 3,600 educational resources used by students and staff.

July 1, 2014-June 30, 2015

PROGRAM HIGHLIGHTS

Residential Services

- An additional 12-bed Monarch Boarding Academy unit opened, increasing Bellefaire's capacity to serve youth with Autism Spectrum Disorder.
- Bellefaire contracted with Cuyahoga County Alcohol, Drug Addiction and Mental Health Services (ADAMHS) Board to provide three crisis beds for community children in need of

intensive residential and mental health services. This included one bed for children diagnosed with both developmental disabilities and mental health needs.

Residential Services

Crisis Stabilization
and Assessments

Intensive Treatment

Transitional and
Independent Living

Integrated Treatment for Mental
Health and Substance Abuse

Monarch Boarding Academy
(Autism Therapeutic Residential)



Foster Care and Adoption

Infant Adoption

Hague Accreditation for International Adoption

Waiting Child Adoption

Treatment Foster Care

Foster Care and Adoption

- The number of domestic adoptions tripled from the previous year.
- A new assistant foster care supervisor, case aide and licensing coordinator joined the Foster Care and Adoption team.
- Through a newly created foster parent ambassador program, current foster parents helped train and recruit new foster parents.
- A referral bonus program was developed to give current foster parents an incentive for referring new foster parents.
- The department began providing chemical dependency drug screens and chemical dependency assessments.

July 1, 2014-June 30, 2015

PROGRAM HIGHLIGHTS

JDN Early Childhood Center

- JDN received 5 Stars – the highest rating possible – from Step Up To Quality (a voluntary quality rating system that recognizes licensed early care and education programs that help prepare children for success in school, work and life). JDN was the first Jewish preschool in the area to achieve this rating.
- All JDN staff were trained on Ohio's New Early Learning Content Standards, as well as on Conscious Discipline.
- iPads were incorporated into the classroom to integrate technology into the learning experience.
- Teacher Debbie Abrams received the Libbie Braverman Teaching Award at the Jewish Education Center of Cleveland's annual meeting.

JDN Early Childhood Center



Counseling and Community Services

Outpatient Child and Family Counseling

Psychiatry/ Pharmacologic Management

Psychological Testing and Evaluation

In-Home Family Preservation Services

Substance Abuse Treatment

Social Advocates for Youth (SAY)

School-Based Counseling

After School Program

Homeless and Missing Youth Program

Counseling and Community Services

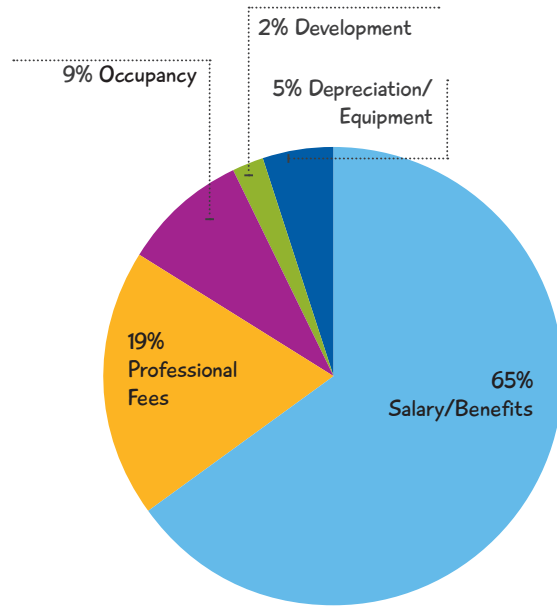
- School-based counselors and social workers served more than 1,900 students in 74 different schools.
- School-based counselors and social workers began providing individual consultation services to students. The department was trained on using the Georgetown Consultation Model to implement this new service.
- SAY sponsored a Youth Forum at Windows by the River for nearly 150 high school students in Cuyahoga County. The program, *Learn it, SAY it, Stop it: Opiates*, focused on the education and prevention of opiate use among teenagers.
- The Outpatient Counseling department began using Functional Behavioral Analysis with children diagnosed with an Autism Spectrum Disorder to help determine which interventions they need at home and in the community.

July 1, 2014-June 30, 2015

FINANCIAL HIGHLIGHTS

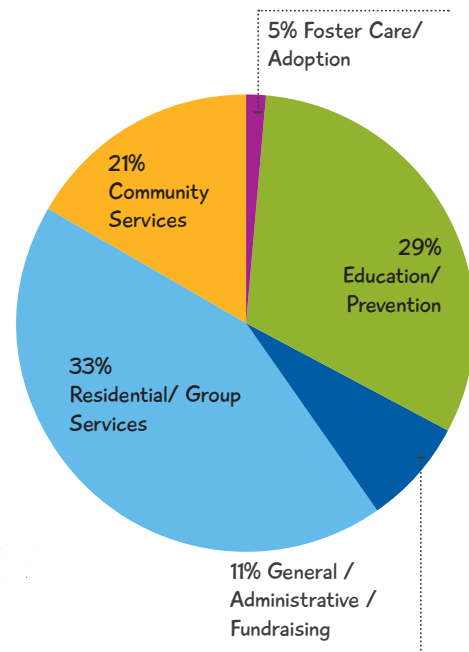
EXPENSES BY TYPE

	%
Salary/Benefits	65
Professional Fees	19
Occupancy	9
Development	2
Depreciation/Equipment	5



EXPENSES BY PROGRAM

	%
Residential/Group Services	33
Community Services	21
Foster Care/Adoption	5
Education/Prevention	29
General/Administrative/Fundraising	11





July 1, 2014-June 30, 2015

THANK YOU TO OUR DONORS

BELLEFAIRE JCB IS A MAJOR BENEFICIARY OF:

Jewish Federation of Cleveland

United Way of Greater Cleveland

\$50,000 - \$99,999

The Cambridge Charitable Foundation

The Honor Project Trust

\$25,000 - \$49,999

Roy A. Hunt Foundation

\$10,000 - \$24,999

The Alpha Group

Sam & Esther Friedman Foundation

Leona and Russell Magid Children's Endowment Fund

Stephanie & Jared Miller Fund

Joshua & Natalie Rubin

The Wuliger Family Foundation

Sandra & Timothy Wuliger

\$5,000 - \$9,999

Shirley S. Aaron Trust

John Aub*

Marc & Viki Byrnes

The Chelm Family Foundation

David & Karen Crane

Fidelity Voice and Data

Harry K. & Emma R. Fox Foundation

vic & joan gelb

Paul & Cookie Joseph

Debbie & Steve Joseph

Faye Kaplan Charitable Foundation

Toby D. Lewis

Milton and Tamar Maltz Family Foundation

Arthur B. McBride Sr. Family Foundation

PNC Bank

Aaron Ruff

Bradley & Heather Schlang

The Sherwin-Williams Foundation

Tapper Charitable Foundation

Norman and Nina Wain Family Foundation

The S.K. Wellman Foundation

\$2,500 - \$4,999

The 250 Club

Anthem Blue Cross Blue Shield

James & Jamie Ballon

Cardinal Health Foundation

July 1, 2014-June 30, 2015

THANK YOU TO OUR DONORS

Morton and Catherine Engle Family Foundation	America	Mars Electric Co.	\$500 - \$999
Abe Glassman/Big Brothers Memorial Fund	Blue Technologies	MCPc, Inc.	Alson Jewelers, Inc.
Irving & Frieda Hand JDN Fund	James & Ivy Boyle	Stanley & Barbara Meisel II Family Fund	Dan Barnett
Marc* & Michele Krantz	Deborah Cowan & Michael Berman	Andy & Minda Meyer	Steve & Susan Bergman
Dr. Samuel & Rosa Lobe Memorial Fund	E. B. Katz Co.	Network for Good	Susie & Richard Block
Oswald Companies	Steven & Carol Eisenberg	Neuintel, LLC	Richard Bogomolny & Patricia Kozerefski
Larry and Julia Pollock Family Philanthropic Fund	Enterprise Holdings Foundation	Julia and Larry Pollock Philanthropic Fund	Beth & Bob Brandon
Grant Roth Memorial Fund of Jewish Federation of Cleveland	Fifth Third Bank	Larry & Julia Pollock	Thomas & Colleen Browne
Stephanie & Todd Silverman	Irving* & Gloria Fine	Schwebel Family Foundation	Michael & Kareen Caputo
Strassman Insurance Services Inc.	Forest City Enterprises, Inc.	Senkfor Family Foundation	Cuyahoga Community College Foundation
Norman Wain	Gary & Debra Gabel	Spectrum Diversified Designs, Inc.	Elizabeth Dery & Steve Schechter
\$1,000 - \$2499	Don & Sue Groszek	Jan & Bill Stern	Daniel & Paula Dreyfuss
A. Raymond & Ann Abt Fund	Rochelle & Harley Gross Philanthropic Fund	Morris & Eva Stone JDN Early Childhood Center Fund	Kenneth & Darcy Edelman
B'nai B'rith Heights Blaugrund Weingarden Lodge	Harbert Family Limited Partnership	Kathy & John Thompson	Executive Arrangements
Baldwin Wallace University	Integrated IT Group LLC	Mark & Melanie Wax	Irwin & Barbara Feldman
Benesch, Friedlander, Coplan & Aronoff LLP	Lippman Kanfer Family Foundation	Doug Weintraub	Dennis & Marianne Glazer
Big Brothers Big Sisters of	Bradley & Tami Kowit	Clara Weiss Fund	Gary & Cathy Glazer
	David LaRue	West Shore Unitarian Universalist Church	George B. Golden Memorial Fund
	Richard Lichlaw	Robert Wolff & Paula Silverman	Lee & Amy Handel
	Littler Mendelson		Herman Textile Company, Inc.
	Lodar Inc.		Andrew Hertz & Linda Rae

Janitorial Services Inc.	Charitable Fund	Henry Bloom & Marilyn Malkin	Michael & Laura Jaffe
David Kaplan & Kathy Smachlo	Robert & Margo Roth	Debra Brass	David & Susan Kattan
Mitchell & Yitah Katz	Peter Rubin	Change For Charity Legacy Village	Kaval Levine Management
KJ Mirman Construction Co	Samuel B. Rubinstein Memorial Fund	Gerald & Winnie Chattman	Elizabeth & David Krantz
Robert I. Kohn Family Philanthropic Foundation	Steve Saltzman	Ruth & Louis Clay Endowment Fund	David & Elana Landman
Kottler Metal Products, Inc.	Brad & Sharon Sanders	Leslie & Douglas Cohen	Sid & Fran Lasky
James & Joe'l LaRose	Eva Weitzman Selcer Memorial Fund	George & Kathleen Daniels	Julie Lehman
Morton & Judith Levin	Sonni & Steven Senkfor Family Foundation	David A. Derevjanik	Jim Levine
Marc's	Simpson Screen Print Limited	Douglas Dwosh	Steve & Lillian Levine
Margaret & Richard Margolis Philanthropic Fund	Joshua & Ilana Skoff	Jason Edelstein & Leah Wagner	Marbeach Foundation
Bonnie & Daniel Marks	Sleggs, Danzinger & Gill, Co., LPA	Aaron Emig	Jennifer Muehle
Richard Marshall & Kathleen Newell	Southgate Lock & Security	Michael & Gretchen Farrell	Martin & Mary Kay O'Toole
William Mathews	Scott & Shani Spiegle	Donald Fleishaker	Kim & Paul Pesses Philanthropic Fund
Terry & Louise Morris	Jack & Blanche Valancy	Scott & Paula Friedman	Kim & Paul Pesses
Brian & Cindy Murphy	Vendors Exchange International	Steven & Lisa Friedman	Cathy Randall
Richard A. Optican	Vyas Family Charitable Fund	David & Amy Garnitz	The Riverside Company
Perspectus Architecture	Penni & Stephen Weinberg Fund	Donald & Lois Gaynor	Sol A. Ross Memorial Fund
Plantscaping & Blooms	Welcome House	Michael & Rosemary Ginzberg	Donald & Toni Scherzer
Regional Reps Corporation		Stephen & Laurie Girsky	Shaker Auto Lease, Inc.
Rini Brothers	\$249 - \$500	Nancy Green	Susan Silverberg & Rich Bewie
RMS Management Account	Ally & Shaw Abrams	Heinen's	Howard & Beth Simon
Bruce & Barbara Rose	Agnon School	Julie & John Hertzner	Edwin & Naomi Singer
Charles & Carole Rosenblatt	Richard H. Bamberger Philanthropic Fund	HW & Co., CPAs & Advisors	Squire Patton Boggs
The Roth Family		Adam & Melissa Jacobs	Don Stern
			University Heights Masonic Lodge #738

July 1, 2014-June 30, 2015

THANK YOU TO OUR DONORS

Jerome Weiss & Judith Salomon	Susan L. Bauman	Richard & Cheryl Carlisle	Michael & Susan Cristal
Berle and Bruce P. Zeldman Memorial Fund	Jules & Fran Belkin	John J. Carney Trust	Lisa Cronig
GIFTS UP TO \$249	Anita Bellenchia	Causecast Foundation	Cheryl Croone
Betty Abraham	Stanley & Brenda Bellowe	David Cerone	Edward & Arlene Cutler
Daniel Abrams & Nan Cohen	Ben & Jerry's	Christopher Chapman	Peter Danford
Ethel Abrams	Richard I. Berger	Stephen & Cheryl Cheatham	Dave's Cosmic Subs
Ian & Gloria Abrams	Keevin & Judy Berman	Keith & Beth Chelm	Gregory & Annette Davis
Harvey & Judy Actor	Stanley Bernath	Donald & Dolores Chiavetta	Brian & Stacey Davis
Barry & Debbie Adelman	Gary & Janice Bilchik	Loren & Heidi Chylla	Larry & Christina DeAngelis
Herb & Rhoda Agin	Jerald & Betty Blizin	Citation Oil & Gas Corp.	Thomas & Kathy DeMinico
Christine Almasy	Flora Blumenthal	Cleveland Coca-Cola Bottling Co.	Jacquelyn F. Derron
Scott & Leslie Alperin	Barry & Marcy Bockow	Cleveland-Marshall College of Law	Jim Dery
Celeste Andre	Ernest Bode	CliftonLarsonAllen LLP	Brian & Cathy Dewyre
Paul Angart	Larry Boro	Benoit & Jennifer Cohen	James & Marilyn Dewyre
Susan Anker	Lisa Botkin	Gena & Ethan Cohen	Lynne Dewyre
Anne Annone	MaryAnn Boyer	Jamie & Wendy Cohen	Alexander S. Dowling
Barbara Ashdown	Alfred & Bev Brown	Ronald Cohen	Elizabeth Dreben & Hillel Chiel
Jen Auner	Stanley & Barbara Brown	Community Foundation	Larry Dubin
Jason & Cara Baker	Rachel Browner	William & Vivian Corbett	Bob & Darlene Duvin
Robin Barrish	George & Joanne Buchko	Jeff & Jo Anne Crair	Charles & Leslie Edelsberg
Harriet Bauer	Eliza Byrnes	John Craig	Brian Engel
	Rodger Cahn	David & Meghan Crampton	Gerland & Shulamith Erenberg

Eton Chagrin Boulevard	Nicholas & Ruthie George	Cheryl Gyekenyesi	Gary & Judy Isroff
Robert & Bonnie Evans	David & Audrey Glaser	Tiffany Hailey	Jaffe Charitable Foundation
Karen Fahle	Lori Glead	Lowy Haiman Fund	Jeff & Wendy Janison
Allan & Susan Felber	Nelson & Jeri Glueck	Barbara Halpern	Angela Jarrell
Joseph & Shirley S. Felber Family Philanthropic Fund	Ron & Debra Goetz Goldberg Kohn	Arthur & Glenda Harris Tim Hartman	David & Cynthia Joseph Mohini Joshi
Edward & Catherine Feldman	Sandra Golden	Tobey Hartman	Larry & Suellen Kadis
Thomas Ferkovic	Phillip & Sheryl Golden	Hasenstab Architects, Inc.	Colman & Marcia Kahn
Jeff & Jo Ann Fink	Stephanie Goldscher	Lawrence Hatch	Ronald Kahn
Larry & Hope Footer	Howard & Bonnie Goodman	Robert & Lisa Heiser	Arthur & Jacqueline Kaplansky
Forest City Hebrew Benevolent Association	David Goodman & Julie Mintz	Alan & Sheri Heller	Howard & Marilyn Karfeld
Janice Foti	Eugene & Eileen Gordon	Holly Hellums	Jennifer Karn
Marc & Ann Freimuth	Murray & Joyce Gordon	Beth Ehrbar	Natalie Karn
Lester Frank & Bobbie Friedlander	Ronald & Linda Gordon Suzanne Goren	John S. and Elaine M. Hibshman Philanthropic Fund	John & Carole Kealy Jim & Vella Keeler
Eric & Debbie Friedman	Harry & Joyce Graham	Elizabeth J. Hickle	Doreen Kelleher
Harold & Nancy Friedman	Aric Greenfield & Nancy Wolf	Alan & Sally Hirsh	Steven & Gale Klayman
Howard & Patricia Friedman	Robert & Sally Gries	Alan & Gayle Hochheiser	Ethel Klein
The Friendship Circle	Bert & Bunny Griffin	Jim & Jeanne Hochman	John & Karen Kleinhenz
Jay & Hope Fromson	Pamela Griskel	Sharon Hohman	Kathy Knopp
Randall & Margaret Furnas	Judith Gross	Douglas Holbert	Anita Koblitz
Daniel Gallagher	Michael & Luann Guervitz	Betty Holdstein	Martin Kohn & Marcia Silver
Wayne Gallagher	Homer E. Guren Real Estate LLC	Aaron & Carolyn Horowitz	Joseph & Anita Kohler
Gail H. Gandal	Rebecca Gurshman	Robert & Sophie Horvath	Megan Konopinski
Jennifer Gehrlein	Robert & Stephanie Gutin	David Hutt	Edward & Bonnie Kraus
Andy & Leslie Gelfand		Michael & Susan Hyman	Karel Kroos

July 1, 2014-June 30, 2015

THANK YOU TO OUR DONORS

Kathleen Krupar	Marc & Nancy Loewenthal	Wayne & Darlene Monaco	Larry & Beth Pollack
Donna Kurit	Jeff Lox & Paul Nemitz	Jessica Moore	Daniel & Deborah Polster
Dan & Monica Lacks	Michael & Lynne Luck	Judy Moran	Progressive Insurance Foundation
Pauline Lacy	Zach & Sara Luck	Francine Tina Morris	Richard & Ellen Rabb
Lois Langell	Larry Mack	Mel & Harriet Morris	Karen Raybuck
Richard & Sheri Lawrence	Brian Magden	Jan & Linda Moskowitz	Bonnie Reinberg
Melvin Lazerick	Malco Products, Inc.	Natalie Mroz	Marty Resnick & Sherr Appleton
Henry Lee	Mandel Jewish Community Center of Cleveland	Howard & Mary Mulholland	Kenneth & Amy Rogat
Jeffrey Leeson	Michael & Nicole Manni	Cindy Myers-Parr	Beverly Roitman
Leff Electric	Gregory & Shelley Milin Marcus Philanthropic Fund	David & Muriel Nachman	Nancy Rome
Jeffrey Lehman	Petty Marla	Trisha Napier	Carl Roodman
Shirley Leikin	Marshall Carpet One	National Council of Jewish Women	Amy Rosner
Janice Lett	Marshall Equipment Company, Inc.	Christine Niles	Leslie Rosen
Adam Levin & Associates	Daniel & Amy Matathias	Michael & Elizabeth Nochomovitz	Rosenbaum & Associates Inc.
Jared & Lora Levin	Kevin & Dorothy McCarthy	Larry & Eleanor Nudelman	Bert & Leona Rosenbluth
Mark & Berinthia LeVine	John & Heather McCollough	Nurenberg Paris	Enid & David Rosenberg
Mike Levine	Tracy Mclvor	Anthony & Sarah Oliver	Debby Rosenthal
Judith Libava	Charles Miller	John & Mary Jo O'Neill	Paul & Donna Rotman
Scott Lichtenstein	Judith Miller	Barbara Pal	Alice Roth
Charles W. Lissauer Philanthropic Fund	Stephanie and Bret Mirman Fund	Brooke Peppard	Bryan & Judith Roth
Elizabeth Littman	Mobile Giving Foundation	Sarah Perkins	Jerome & Mayda Rothenberg
Mary Loeb		Pizzazz On the Circle	
Peter & Helen Loewenstein			

Richard & Diana Routman	Amnon & Edia Shai	Jessica Syverson	Steve & Chris Weitzner
Eric & Patricia Rubin	Irene Shapiro	Keith & Carey Teicher	Robert & Brenda Weltman
Richard & Penni Rubin	Mike Sheets	Michael Thomas	Stanley & Sally Wertheim
Steven & Susie Rubin	John Shelley	Ernest & Diane Tirpak	The Western Reserve Historical Society
Iris R. Rubinfeld	Scott & Tanie Sherman	Francis G. Titas	Scott & Amy Whetzel
Hal & Erika Rudin-Luria	Sanford & Estelle Shore	Neil & Jo-Ann Tobin	Alton Whitehouse
Susan Salkovitz	David & Suzanne Shoub	Henry & Rosemarie Tomasetti	Myra White
Martin & Mary Ellen Saltzman	Ted & Natalie Silverberg	Truist Comprehensive Distribution	Steven & Trudy Wiesenberger
Michael & Susan Saltzman	Steve & Amy Small	Allan & Patricia Tuchman	Steve & Judy Willensky
James Saunders	Diane Snow	Howard & Sara Tucker	Betty R. Williams
Dianne Schachner	Diane Snyder	Jule Turnoy	David & Carol Willen
Michael & Trina Scharf	David Sokol	John Tynan	Leon & Ellen Williams
Herbert Schilling	Marvin & Judy Solganik	United Way of Greater Milwaukee	Harvey* & Judith Wiseberg
Elliott & Gail Schlang	Vivian Solganik	Kathryn Henderson Ursu	Evan Witt
Dan Schlegel	Douglas & Ginny Solomon	Mary Ann Vincent	Linda & Clifford Wolf Family Advised Fund
Edwin & Carolyn Schmith	Tom & Judy Spaulding	Katharine Johnson Vinciguerra	Steven A. Wolotsky
Mitchell & Karen Schneider	Susan Spencer	Scott & Beth Wachter	Yvonne Wolters
Andrew & Heidi Schupp	Margaret Squires	Nancy Walfish	William A. Wortzman
Debra Schwartz	Carol Stark	Timothy M. Walker	Nicole Wulff
Morley & Rosalie Schwebel	Lester & Elizabeth Stiel	Paul Weiner	Melissa Yasinow
Mark Schweitzer & Marijke Schweitzer-Schutte	Paul & Edna Stein	Sharon Weinstein	John & Ann Yurco
Alan & Sheila Scolnick	Mark & Francine Steinbock	Edward & Gail Weintraub	Michael Zabell & Minda Rudnick
Harris & Julianna Senturia	Catherine Stone	Eleanor Weisman	Sandy Zabell
Alan & Jessica Sernel	Leonard & Ruth Sweet	Herbert & Betty Weiss	Halle Zucker
M & J Shafran Foundation	Sweet Melissa's		Kalman Zucker & Mary Frances Haerr
	Roger & Joan Synenberg		

July 1, 2014-June 30, 2015

THANK YOU TO OUR DONORS

GIFTS IN KIND

American Greetings Corporation	John Carroll University	Trader Joe's
Bialy's Bagels	Deborah & Steve Joseph	U.S. Foods
Bimbo Bakeries	Richard Katz	Ursuline College
Beth & Bob Brandon	Adam Kaufman	Mark & Melanie Wax
Chagrin Falls High School	Sidney & Fran Lasky	Jerome Weiss & Judith Salomon
Corky & Lenny's	Littler Mendelson	Sandra & Timothy Wuliger
Mark Corrado & Natasha Sharkunov	Mark Freiman Entertainment	Jodi Zawatsky
Cheru Cuffari	Bonnie & Daniel Marks	
D & R Bagels	Mason Structural Steel, Inc.	
Laura Dalessandros	Mary McClain	
Dave's Markets	DeAngelo Moss	
Discount Drug Mart	Park Synagogue	
Einstein Brothers Bagels	Larry & Julia Pollock	
Steven & Carol Eisenberg	R.H. Myers Apartments	
Brad Fellows	Rainbow Babies & Children Hospital Ped. Emerg. Depart.	
First Watch	Joshua & Natalie Rubin	
Jeremy Flack	Donald Samuels	
Kelli Gellis	Allison Solomon	
Giant Eagle - Lyndhurst	Kim Stearns	
Ashley Hughes	Captain Keith Sulzer	
J. Plstone	Kathy & John Thompson	

WE RECOGNIZE THE FOLLOWING FOR THEIR FINANCIAL COMMITMENT TO SUPPORT EMERGING PROGRAMMATIC AND CAPITAL PRIORITIES OF BELLEFAIRE.

Anonymous

Beth & Bob Brandon

Robert Englander

Adam & Melissa Jacobs

Elisabeth Severance Prentiss Foundation

The Cathy Randall Family Foundation

Jan & Bill Stern

Nicholas Vucelic, Ingeborg Perzl Vucelic, and Milojko "Mike" Vucelic

Wain Family Donor Advised Fund

Mark & Melanie Wax

Robert Wolff & Paula Silverman

The Wuliger Family Foundation

* denotes deceased

BOARD OF DIRECTORS

AS OF 6/30/15

EXECUTIVE COMMITTEE

Brad Schlang, *Chair*
Adam G. Jacobs, Ph.D.,
President
Brian Davis, *Secretary*
Stephanie Silverman,
Asst. Secretary
Steve Bergman, *Treasurer*
Beth Brandon
Marc Krantz z'l
Stephanie Miller
Josh Rubin
Brad Sanders
Sonni Senkfor
Rob Wolff
Sandy Wuliger

DIRECTORS AT LARGE

Ally Abrams
Susie Block
Loren Chylla
Leslie Cohen
David Crane
Steve Eisenberg
Bob Englander
Julie Hertzner
Debbie Joseph
David Katz
Betsy Krantz
Julie Lehman
Jim Levine
Scott Lichtenstein
Mark Munsell
The Hon. Daniel Polster
Cathy Randall
Steve Saltzman
Diane Singer
Susan Silverberg
Kathy Thompson
Steve Weitzner

DIRECTORS EMERITI

Lois Gaynor
Donald Goldman
David Nachman
Nancy Rome
Charles Rosenbaum
Jan Stern
Steven Wiesenberger
Sandra Wuliger

ORGANIZATIONAL DIRECTORS

Susan Saltzman
Marvin Smith
Rick Solomon
Evan Witt

DIRECTORS FOR LIFE

Gerald Chattman
Irwin Feldman
vic gelb
Larry Pollock
Edwin Roth
Peter Rubin
Vivian Solganik



Bellefaire Mission

Bellefaire JCB is an innovative organization that provides exceptional care, education, and advocacy to enhance the emotional, physical and intellectual well-being of children, young adults, and families in the Jewish and general communities.



Bellefaire JCB

One Pollock Circle
22001 Fairmount Blvd
Cleveland, Ohio 44118
216.932.2800
bellefairejcb.org